

6MP Smart AI 30M Dual Light, Dome PoE IP Camera  
with Red&Blue Alarm LED, Built in MIC/Speaker, SD Slot

AirCam EYDL-630XAI-RBMS



6MP 3072x2048	2.8 mm Fixed Lens	30M IR 20M Light	Mic/Speaker Built-in	Smart AI Function	48V PoE
H.265 H.264	Red & Blue Alarm LED	RTSP OnVif	SD Card Slot	IP67 Waterproof	Android, IOS APP Supported

Overview

Experience superior surveillance with our 6MP AI Dual Light 30M Dome PoE IP Camera, The AirCam EYDL-630XAI-RBMS -a state-of-the-art Smart AI surveillance solution. Achieve crystal-clear image quality with its Sony CMOS sensor technology. Benefit from powerful 30-meter Dual Light vision, ensuring comprehensive coverage day and night. The smart Dual Light technology will save on large recording files but still offer full color images when motion is detected. Full color image during the day and IR images during the night, when human/vehicle is detected the built in Light LED will turn on and full color images will be recorded of the human/vehicle is detected. Smart AI functions the Aircam offers many extra AI features including: Human Body & Vehicle Detection, Cross Line, Area Intrusion, Enter/Leave Area and Face Detection. Extra security with the Red and Blue LED which will flash when the alarm is triggered. The camera also comes with a Built-in Mic and Speaker to worth of intruders. Enjoy easy installation via Power over Ethernet (PoE) for hassle-free setup and monitoring. Capture essential details effortlessly with this advanced IP camera, ensuring your security needs are met effectively.

Features

- High-Quality Imaging: Equipped with a 1/2.8" Sony CMOS sensor, delivering sharp 6MP HD resolution (3072 x 2048) output.
- Smart Dual Light, Pure Infrared, Pure White Light
- Comprehensive Image Control: Features such as Day/Night, AWB/MWB, 2D/3D-DNR, Shutter, and IR-CUT for optimal image quality.
- Image Enhancement: WDR, Mirror, Rotate, and Defogging functions to improve image clarity.
- Customizable Overlays: Supports multiple Style OSD overlays, Motion Detection, and Privacy Mask for tailored surveillance.
- Compatibility: RTSP and Onvif 23.12 compatibility for integration with various third-party NVRs.
- Efficient Encoding: H.264/H.265 dual-stream media server for efficient video encoding.
- P2P Cloud Service: Easy-to-use P2P Cloud service for remote access.
- Warning LED: Red and Blue Alarm LED
- Security Features: User authentication and video data encryption for enhanced data protection.
- Alarm Handling: Supports Alarm Snapshot to Email and FTP for immediate event notifications.
- Versatile Access: Multiple access options including various web browsers, PC client, and mobile app for remote monitoring.
- IEEE802.3af PoE support for convenient installation.
- Lightning Protection: Equipped with 4000V lightning protection for added durability.
- Weatherproof Design: Robust IP67-rated housing for strong water-proofing.
- Powerful IR and Light Illumination: Features 2pcs IR LEDs & Warm Light up to 30-meter distance.
- Fixed Lens: 2.8mm
- Alarm function: Alarm in/out, Audio in/out
- MicroSD card supported, for local recording.
- Built-in Mic and Speaker.



# 6MP Smart AI 30M Dual Light, Dome PoE IP Camera with Red&Blue Alarm LED, Built in MIC/Speaker, SD Slot

AirCam EYDL-630XAI-RBMS

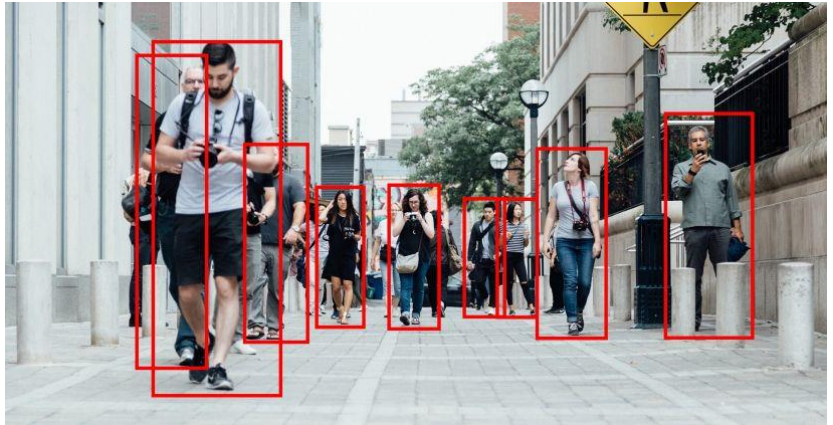
airlive®

## IP Camera Smart AI feature - Smart Human/vehicle detection

Elevate your security with our AI-powered IP camera featuring advanced human and vehicle detection. This intelligent technology ensures accurate alerts, reducing false alarms. With precise identification, it enhances surveillance efficiency, making it ideal for safeguarding your premises. Stay one step ahead with smart, automated security.

### Smart AI –Human Detection

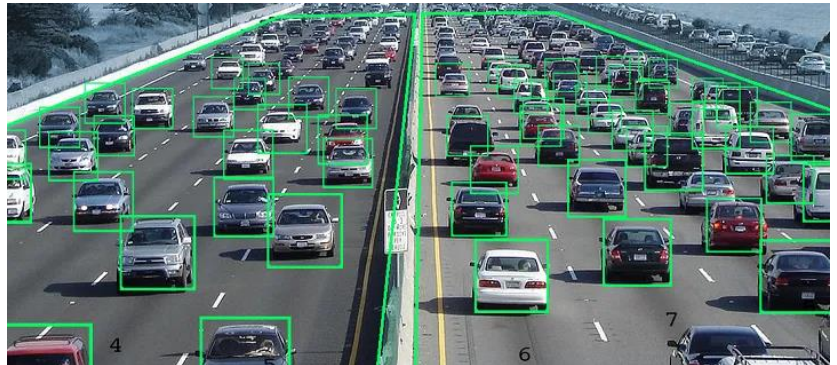
It uses advanced artificial intelligence and computer vision to identify and detect people in various scenarios, such as security, surveillance, retail, and entertainment.



### Smart AI Vehicle Detection for Car and other vehicles

It's mainly to identify and detect vehicles in various scenarios, such as traffic management, parking, toll collection, and security.

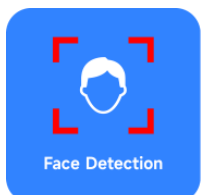
Smart AI aims to provide accurate, reliable, and efficient solutions for vehicle detection needs.



### The AirLive Smart AI extra functions.

Next to the Human and Vehicle detection the camera also supports **Face, Line Crossing, Area Entry/Leaving Detection, Area Intrusion Detection.**

These AI Intelligent Detection functions for selected Detect targets, making it able to detect different targets and to keep track of selected areas the camera is focused on. Track who is coming inside the building with the Face detection or use the Line Crossing detection for extra security when people should not cross a line like on the loading dock or transportation platform. Use the Area Leaving/Entry and Intrusion detection functions. To keep a warehouse area secure or to keep track on selected outdoor area. Thus, giving you a more secure and smart security solution.



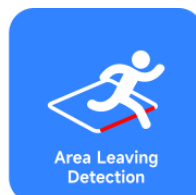
Face Detection



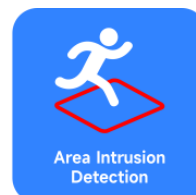
Human body &  
Vehicle detection



Line Crossing  
Detection



Area Leaving  
Detection



Area Intrusion  
Detection



Area Entry  
Detection

# 6MP Smart AI 30M Dual Light, Dome PoE IP Camera with Red&Blue Alarm LED, Built in MIC/Speaker, SD Slot

AirCam EYDL-630XAI-RBMS

airlive®

## Smart Dual Light

The AirCam EYDL-630XAI-RBMS is equipped with both IR and Warm Light LEDs. This feature makes that the camera can work in three different modes. Smart Dual Light, Pure Infrared Light and Pure White Light.

Some of the advantages of Smart Dual Light are:

**Flexible Illumination Modes:** These camera can switch between infrared (IR) mode for low-light environments and warm light mode for full-color video footage. This adaptability ensures optimal visibility in varying lighting conditions.

**Reduced Light Pollution:** The IR mode minimizes light pollution, making it ideal for residential areas or places where minimal light is preferred.

**Enhanced Security:** The warm light mode provides detailed color video, which is crucial for identifying details like clothing or vehicle colors. As shown in the example below.

**Smart Detection:** Equipped with advanced algorithms, the camera focus on human and vehicle targets, reducing false alarms triggered by irrelevant objects.

**Remote Management:** Users can control the camera's illumination remotely via mobile apps, offering convenience and adaptability.

**Reduced NVR recording space:** When video footage is recorded to the NVR 24/7, full color footage would require more storage space. With the Smart Dual Light function only the Human or Vehicle will be in full color, and all other footage in Infrared. Thus, saving on nighttime full color 24/7 recording space.

The Red and Blue LED will be used for extra alarm; they will flash when trigged via the settings in the camera.

## How does Smart Dual Light function:



### IR LED ON

In the absence of a vehicle or person, the camera uses only IR light.



### White LED ON

When a **Vehicle or Human Body** is detected, white light is automatically triggered on, resulting in color imaging and video with clear details.



### IR LED ON

Once the vehicle or human leaves, the cameras switch back to IR light automatically.

# 6MP Smart AI 30M Dual Light, Dome PoE IP Camera with Red&Blue Alarm LED, Built in MIC/Speaker, SD Slot

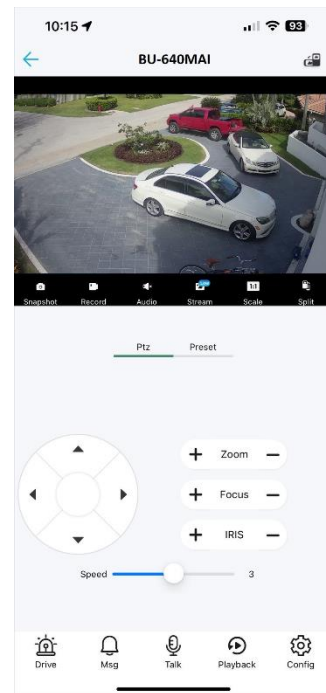
AirCam EYDL-630XAI-RBMS

airlive®

## IP Camera Android/iOS App Support App Search Remoteyes

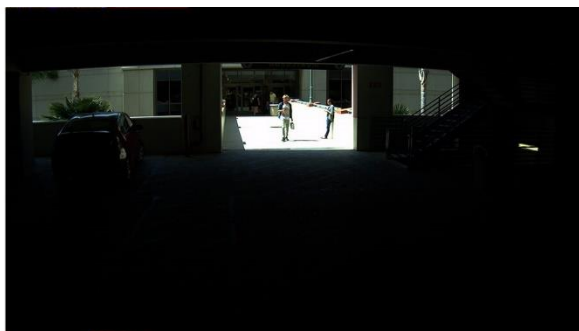
Our IP Camera boasts Android and iOS app support, providing convenient access to your surveillance system.

The user-friendly app, "Remoteyes" allows you to effortlessly search and view video feeds. Stay connected and in control, monitoring your property from your mobile device with ease and convenience.



## Image Enhancement: WDR, Mirror, Rotate, and Defogging functions

The AirCam EYDL-630XAI-RBMS takes image enhancement seriously, offering a suite of advanced features. Wide Dynamic Range (WDR) balances exposure, ensuring well-lit scenes in challenging lighting conditions. Additionally, it provides the ability to mirror and rotate images as needed, enhancing flexibility in surveillance placement. Furthermore, the integrated Defogging function improves visibility in misty or foggy environments, ensuring that you get clear, detailed footage regardless of adverse weather conditions. These features collectively enhance the camera's performance and its suitability for various monitoring scenarios.



WDR OFF



WDR ON



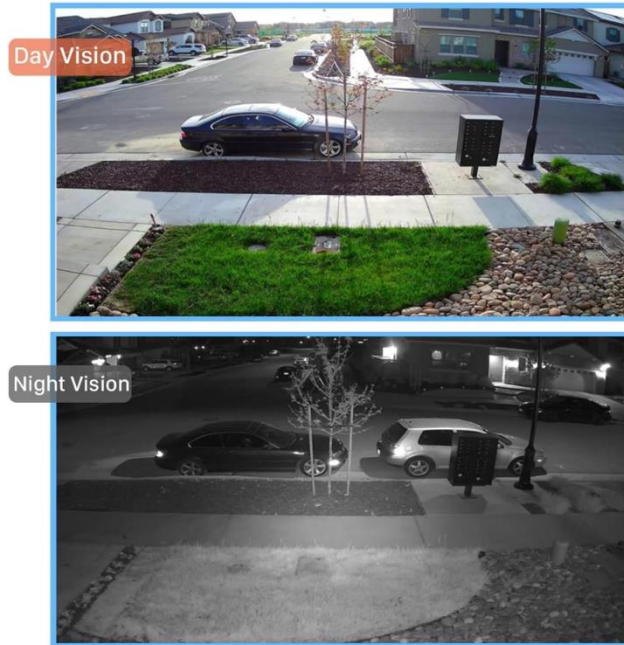
# 6MP Smart AI 30M Dual Light, Dome PoE IP Camera with Red&Blue Alarm LED, Built in MIC/Speaker, SD Slot

AirCam EYDL-630XAI-RBMS

airlive®

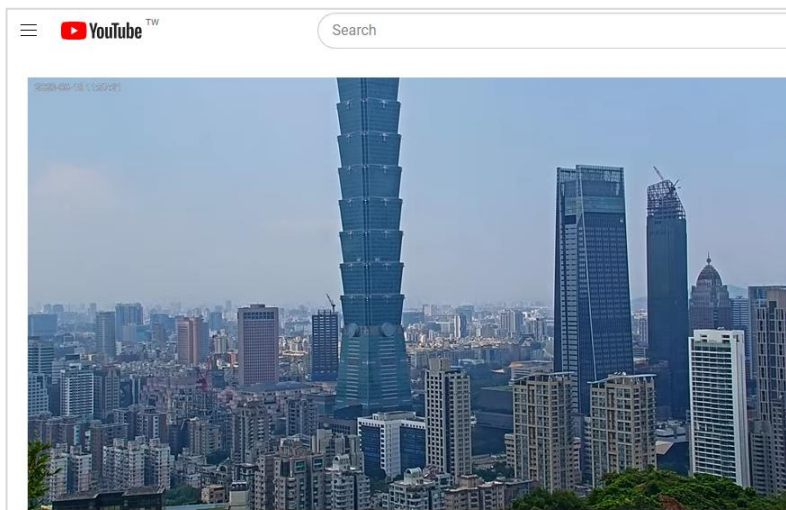
## AirCam EYDL-630XAI-RBMS IR LEDs with a 30-meter IR distance

The AirCam EYDL-630XAI-RBMS is equipped with LEDs, delivering powerful infrared illumination. With an impressive up to 30-meter IR distance, it ensures exceptional night vision capabilities, providing clear and detailed surveillance footage even in complete darkness. Whether it's monitoring large outdoor areas or dimly lit spaces, this camera guarantees reliable 24/7 security coverage, making it a robust choice for various applications. This is when the Dual Light and White Light are not used.



## Streaming your IP Camera to YouTube live

Streaming your IP camera to YouTube Live. Once configured, start the camera's live streaming function, and your surveillance feed will be broadcasted in real-time on your YouTube channel, allowing you to share or monitor events remotely with ease. This function can also be used to Live stream landmarks or other places of interest to a global audience and let people from all over the world enjoy your country.



Model	AirCam EYDL-630XAI-RBMS
<b>Interface</b> <ul style="list-style-type: none"><li>• <b>Network Interface:</b> PoE 802.3af 1x RJ45 10M/100M</li><li>• <b>Media:</b> AirCam64, Android, iOS , Webui</li><li>• <b>Onvif:</b> 23.12 compatible (profile S G T M)</li><li>• <b>Standard:</b> HTTP(s)/RTSP/FTP/SMTP/DHCP/NTP/DST/RTP/RTMP/P2P /HiK/IPv4/IPv6/NFS</li></ul>	<b>LED</b> <ul style="list-style-type: none"><li>• <b>Light:</b> 2pcs IR LEDs &amp; Warm Light, 1pcs Red LED &amp; 1pcs Blue LED</li><li>• <b>Light Distance:</b> 20~25m</li><li>• <b>IR Distance:</b> 30m</li></ul>
<b>Camera</b> <ul style="list-style-type: none"><li>• <b>Image Sensor:</b> 1/2.8" Sony CMOS</li><li>• <b>CPU:</b> Sigmastar</li><li>• <b>Effective Pixels:</b> 6 Megapixels (3072(H)×2048 (V))</li><li>• <b>Exposure Shutter:</b> Auto/Manual: 1/10s ~ 1/8000s, Max. Shutter speed adjustable</li><li>• <b>Day/Night:</b> Auto (Active/passive/schedule)/Day/Night, switch threshold, sensitivity</li><li>• <b>Image Adjust:</b> Brightness, Saturation, Sharpness, Contrast, Denoise (0-100%) adjustable</li><li>• <b>WDR:</b> WDR</li><li>• <b>Low Illumination:</b> 0.01Lux</li><li>• <b>White Balance:</b> AWB/MWB</li><li>• <b>DNR:</b> 2D/3D DNR</li><li>• <b>Light Mode:</b> Smart(dual-light)/Pure Infrared/ Pure White light, adjustable</li><li>• <b>Light Control:</b> Auto/Manual, Brightness level (0-100%) adjustable</li><li>• <b>Other:</b> Day/ Night (ICR), AWR, IR-CUT</li><li>• <b>Mechanical:</b> Waterproof IP67 Housing</li></ul>	<b>Lens</b> <ul style="list-style-type: none"><li>• <b>Lens Focal length:</b> F1.0 2.8 mm Fixed Lens</li><li>• <b>FOV:</b> 1/2.8  101.34° x 54.46° x 119.72° (H x V x D), 2.8mm</li></ul> <b>Smart Detection</b> <ul style="list-style-type: none"><li>• <b>Digital IO Alarm:</b> 1 pair Alarm-in/Alarm-out, normally open/normally close (for the digital alarm, you can send alarm message from ANVR or App to camera directly)</li><li>• <b>Support MicroSD:</b> Up to 512GB. (256GB is recommended)</li><li>• <b>Motion Detection:</b> Schedule/Detection area/Trigger Recording/Trigger Snapshot/Link Blink/Upload Alarm Centre/Trigger Audio</li><li>• <b>Intelligent Detection:</b> Human,Vehicle, Cross Line, Enter/Leaving Area, Intrusion and Face Detection.</li><li>• <b>Target Detection Type:</b> Human Shape, Vehicle, Non-motor vehicle, Pet, Face (32px-800px)</li><li>• <b>Trigger Action Linkage:</b> Snapshot, Record, Relay (Red-Blue LED flash), White LED Flash, Voice siren, Micro-SD, Email, FTP, NAS storage, Support audio alarm to warn intruders off</li><li>• <b>Simultaneous Detection:</b> Maximum 16 targets simultaneous detection</li><li>• <b>Storage Type:</b> Schedule/Trigger: Micro-SD, Email, FTP, NAS</li></ul>
<b>Encode</b> <ul style="list-style-type: none"><li>• <b>Video Standard:</b> H.265/H.264/MJPEG</li><li>• <b>Video Resolution:</b> Main Stream: 25fps@6MP(3072x2048)/30fps@5MP(2592x1944)/ 4MP(2560x1440)/3MP(2304x1296)/1080P/720P Sub stream: 10fps@720P, 30fps@D1(704x576)/(720x480)/VGA(640x480)/QVGA(640x360)</li><li>• <b>Video Bitrates:</b> Sub stream: 64kbps-8Mbps, Sub stream: 64kbps-2048kbps, VBR/CBR, quality(1-9), GOP(1-128)</li><li>• <b>Image Rotation:</b> 0 / 90 / 180 / 270 degree adjustable</li><li>• <b>Border Crop:</b> X crop, Y crop</li><li>• <b>Image Mirror:</b> Horizon / Vertical / Horizon &amp; Vertical adjustable</li><li>• <b>OSD Overlay:</b> Font size(1-4), Position, Time, Title, AM/PM, Color, User OSD, Alarm OSD</li><li>• <b>Privacy Mask:</b> 4 areas</li><li>• <b>Region of Interest:</b> ROI: Each stream support 8 areas</li><li>• <b>Audio Standard:</b> G.711-u/G.711-a/AAC/PCM, AEC</li><li>• <b>Two Way Audio:</b> Supported</li><li>• <b>Microphone:</b> Built-in Mic</li><li>• <b>Speaker:</b> Built-in Speaker</li></ul>	<b>Multiple Language</b> <b>APP and Software Control</b> <ul style="list-style-type: none"><li>• Windows: Web browser, AirCam64</li><li>• iOS/Android: Download "Remoteyes" App from APP/Play Store)</li><li>• *NVR APP iOS/Android: Download "Guard Viewer" App from APP/Play Store, (can be used when camera has been added to ANVR AI.)</li></ul>

\* Specification will be changed without prior notice

\* All trademarks, logos and brand names are the property of their respective owners.

AirLive

Model	AirCam EYDL-630XAI-RBMS
<div><b>Power Input</b><ul style="list-style-type: none"><li>Power Supply: 12V DC or PoE: 802.3af</li><li>Power Consumption: ≤8 W</li></ul><b>Environment</b><ul style="list-style-type: none"><li>Operating temperature: -20°C ~ +60°C</li><li>Operating Humidity: 10% ~ 90% (non-condensing)</li></ul><b>Standard package of Camera</b><ul style="list-style-type: none"><li><b>Product size:</b> Φ127 x 104.7mm (H)</li><li><b>Package size:</b> 12.7 x 13.0 x 12.5cm(L*W*H)</li><li><b>Package Weight:</b> N.W: 0.4750kg G.W: 0.5655kg</li><li><b>Package content:</b> IP Camera/Network cable/QIG/Waterproof connector</li></ul><b>Standard carton package</b><ul style="list-style-type: none"><li><b>Quantity:</b> 30pcs / 1 carton</li><li><b>Dimensions</b> 51.0 x 45.0 x 31.5cm (L*W*H)</li><li><b>Weight</b> 19.0kg (G.W)</li></ul><b>Ordering Information</b><ul style="list-style-type: none"><li><b>Model:</b> AirLive EYDL-630XAI-RBMS</li><li><b>Name:</b> 6MP Smart AI 30M Dual Light, Dome PoE IP Camera</li></ul></div>	

\* Specification will be changed without prior notice

\* All trademarks, logos and brand names are the property of their respective owners.

AirLive